

H Hybrid Connectors Seismic and Hurricane Ties for Wood Truss or Joist-to-CFS Wall

Designed to provide seismic and wind ties for wood trusses or joists-to-CFS walls, this versatile line may be used for general purposes, strongback attachments, and as all-purpose ties where one member crosses another.

HS24 attaches the bottom chord of a truss or rafter at pitches from 0:12 to 4:12 to steel top plates.

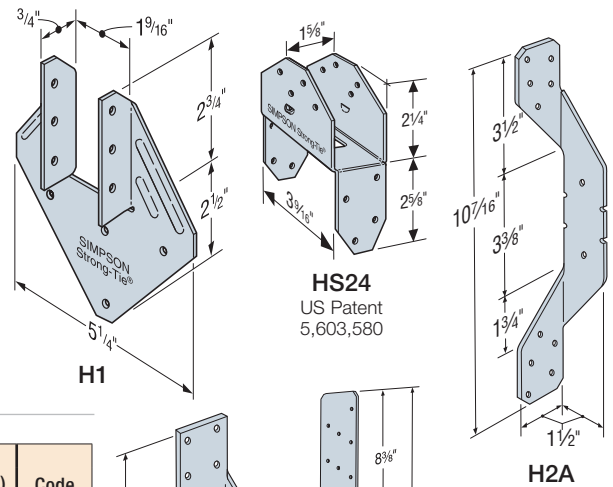
Material: See table

Finish: Galvanized (G90). Selected products available in stainless steel or ZMAX® coating. See Corrosion Information, pp. 17–19.

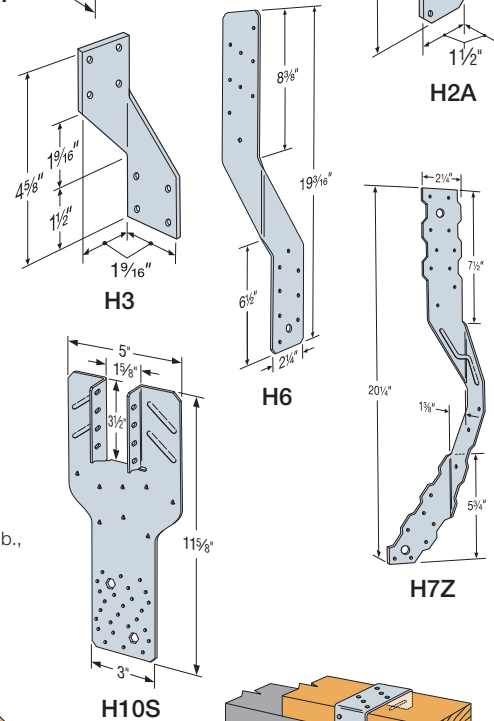
Installation: • Use all specified fasteners; see General Notes

- H1 can be installed with flanges facing inward (reverse of illustration 1)
- Hurricane ties do not replace solid blocking
- H3 and H6 ties are only shipped in equal quantities of rights and lefts

Codes: See p. 11 for Code Reference Key Chart

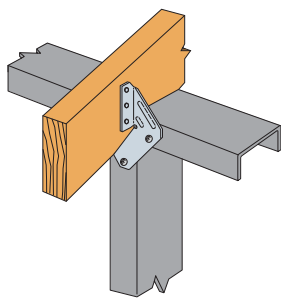


Model No.	Connector Material Thickness mil (ga.)	Fasteners ⁵			Allowable Uplift Load 33 mil (20 ga.) (160) (lb.)		Code Ref.
		To Rafters/ Truss	To Top Track	To Stud	DF/SP	SPF/HF	
H1	43 (18)	(6) 8d x 1 1/2"	(3) #10	(1) #10	600	500	—
H2A	43 (18)	(5) 8d x 1 1/2"	(1) #10	(5) #10	550	460	
H3	43 (18)	(4) 8d x 1 1/2"	(4) #10	—	365	305	
H6	54 (16)	—	(8) 8d	(8) #10	950	820	
H7Z	54 (16)	(4) 8d x 1 1/2"	(2) #10	(8) #10	985	845	
HS24	43 (18)	(8) 8d x 1 1/2"	(4) #10	(4) #10	625	520	
H10S ⁵	43 (18)	(8) 8d x 1 1/2"	—	(8) #10	930	780	

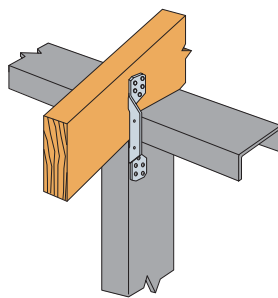


These products are available with additional corrosion protection. Additional products on this page may also be available with this option. Check with Simpson Strong-Tie for details.

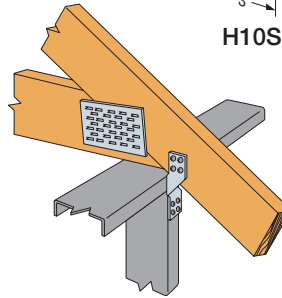
- Allowable loads on wood have been increased 60% for wind or earthquake loading with no further increase allowed; reduce where other load duration factors govern.
- Hurricane Ties are shown installed on the outside of wall for clarity. Installation inside of wall is acceptable. For Continuous Load Path, connections must be on same side of wall.
- When cross-grain bending or cross-grain tension cannot be avoided, mechanical reinforcement to resist such force should be considered.
- H10S connectors can be installed 3/4" (max.) from the center of the vertical stud per the in-line framing specifications of the AISI General Provisions for reduced uplift of 890 lb., provided that the screw edges are met.
- See *Fastening Systems* catalog (C-F-2019) on strongtie.com for more information on Simpson Strong-Tie fasteners.



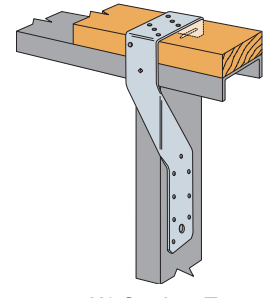
1 H1 Installation



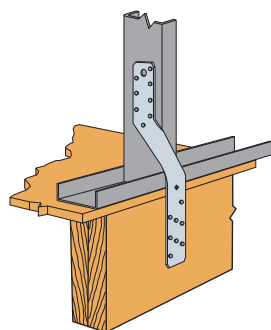
2 H2A Installation



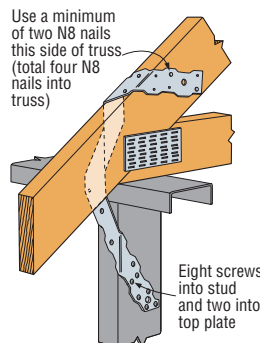
3 H3 Installation



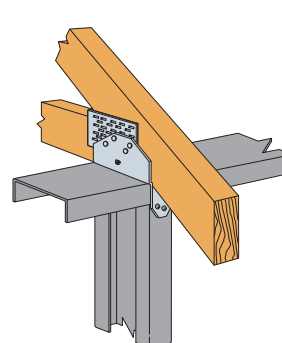
4 H6 Stud-to-Top-Plate Installation



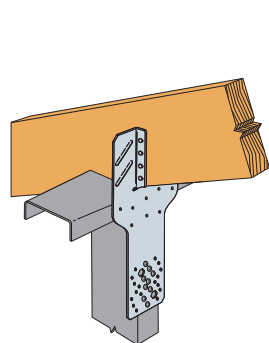
5 H6 Stud-to-Band-Joist Installation



6 H7Z Installation



7 HS24 Installation



8 H10S Installation