

DECKFAST® Metal

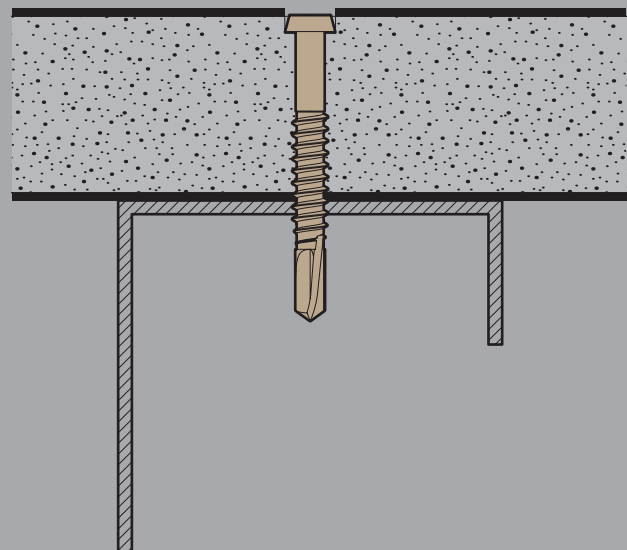
Color Matched Screws for Fastening PVC, Composite and Hardwood Decking to Trex Elevations® and other Metal Framing Systems

Deckfast® Metal screws are designed to attach PVC, composite and hardwood decking to steel and aluminum, including Trex Elevations® steel deck framing and Wahoo® Decks and Docks aluminum joist systems. Deckfast Metal is the first line of deck screws designed specifically for this application.

Deckfast Metal screws are made of Grade 410 stainless steel and feature extra deep star drive recesses, undercut heads, drill points, and an epoxy-based polymer resin coating over zinc plate. They are available in a wide range of colors to match popular decking products.

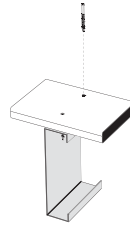
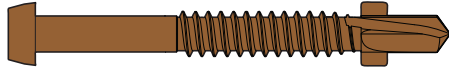
Deckfast Metal is available in two sizes: 10 x 1 5/8" for one-inch thick decking materials and 12 x 2 3/8" for two-inch thick decking materials.

For applications exposed to salt air, near large bodies of water, swimming pools or other areas where corrosion is more likely to occur, use Marine Grade 316 Cap-Tor® xd Headcote® Stainless fasteners with a wooden sleeper system.



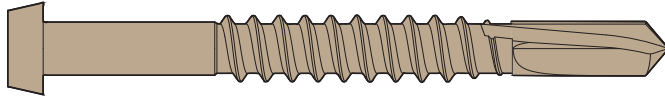
Note: Wings on 1 5/8" Deckfast Metal are designed to shear off during installation.

Sizes



Deckfast Metal for One-Inch Decking (with wings)

T-20 star drive: 10 x 1 5/8" | #3 Drill Point



Deckfast Metal for Two-Inch Decking (without wings)

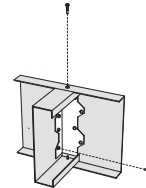
T-20 star drive: 12 x 2 3/8" | #4 Drill Point



Buildex® Teks Select™

For all Steel-to-Steel and Bracket Connections in Trex Elevations®

5/16" Hex Washer Head: 10-16 x 3/4"



The 10 x 1 5/8" version of Deckfast Metal is designed for decking materials with an actual thickness of 3/4" to 1" attached to steel or aluminum up to 12 gauge or two 14 gauge joists doubled up. The 12 x 2 3/8" version of Deckfast Metal is designed for decking materials with an actual thickness of 1" to 1 1/2" attached to steel or aluminum up to 3/4" thick. Both versions are Trex® approved.

Approved for Trex Elevations® and Wahoo® Decks / Docks

Deckfast Metal screws are approved for use with Trex Elevations® steel deck framing and Wahoo® Decks DryJoist® and DryJoistEZ systems, as well as Wahoo Docks products.

Buildex® Teks Select™: Starborn distributes Teks Select 10-16 x 3/4" fasteners approved for use as framing screws with Trex Elevations®. Teks Select fasteners are dual hardened and have a Climaseal ACR™ finish. They can be used for all Elevations steel-to-steel and bracket connections, as directed in the Elevations Installation Guide.

Trex Elevations® is a trademark of Trex Company, Inc. Teks®, Teks Select™ and Climaseal ACR™ are trademarks of ITW Buildex® and Illinois Tool Works, Inc. Teks Select is manufactured in the USA by ITW Buildex and packaged and distributed by Starborn Industries. Wahoo® and DryJoist® are registered trademarks of GDC Enterprises, Inc.

Deckfast Metal packs



100 pc.
Accessory
Pack



350 pc.
(100 sq ft)
Deck Pack



1750 pc.
(500 sq ft)
Pro Pack



3500 pc.
(1000 sq ft)
Mega Pack



100 pc.
Pack



500 pc.
Pack

Buildex® Teks Select™

Color samples



Brown (#34)



Gray (#37)



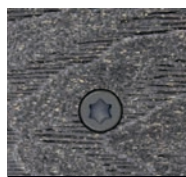
White (#39)



Dark Gray (#53)



Warm Gray (#54)



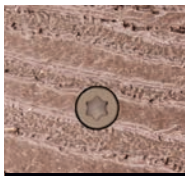
Dark Slate (#55)



Sand (#64)



Rosy Brown (#65)



Chocolate (#71)



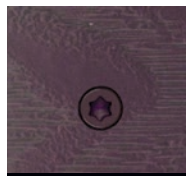
Java (#73)



Cedar (#81)



Mahogany (#82)



Burgundy (#87)



deckmatcher.com

For color matches with popular decking products, see the Deck Matcher in print (back cover) or online

